

# CHARTING NEW TERRITORIES



CHOC FOUNDATION 2020-2021  
PHILANTHROPIC ANNUAL REPORT

 **CHOC Foundation**





## A MESSAGE FROM DOUG CORBIN

At CHOC, we stop at nothing to continue serving our mission to “nurture, advance and protect the health and well-being of children.” Not only has our work continued uninterrupted during the COVID-19 pandemic, but it also has, in many aspects, accelerated.

The challenges posed by the pandemic propelled us to reinvent the ways we deliver care and have unlocked unimaginable opportunities to map the future. The generosity of our community is what allowed us to look beyond the crisis, innovate and re-frame the obstacles into pioneering plans and aspirations for CHOC to become the best place in the nation for pediatric healthcare.

CHOC is shaped by our dynamic donors and the instrumental roles they play in our progress and growth. With your support, kindness and generosity, we are able to lead the way in pediatric healthcare, be equipped with the latest technologies and provide new programs and services that enhance our young patients’ and their families’ journey to wellness.

Philanthropy is imperative to the success of what we do as we continue to move toward unprecedented destinations and chart new territories. Thank you for realizing the full measure of CHOC’s mission and believing in our goal to create healthier tomorrows for children now and for generations to come.



Douglas J. Corbin, CFRE, CSPG  
Senior Vice President & Chief Development Officer





## ELEVATING THE PATIENT EXPERIENCE

### ENHANCING CHOC MAGIC WITH DISNEY STORIES

Through beautiful art installations, our patients and families can virtually and physically interact with their favorite Disney friends throughout CHOC's main campus and the Thompson Autism Center in Orange, California.

[SEE THE DISNEY ARTWORK](#)

### WELCOMING RESIDENT DOGS

Unlike pet therapy animals brought to hospitals by volunteers, resident dogs are trained from birth to be an integral part of therapeutic treatment. Supported solely by philanthropy, Lois and Odessa, CHOC's two resident service dogs, are bringing joy and healing to our patients.

[MEET LOIS](#)[MEET ODESSA](#)

### NAVIGATING HOSPITAL HALLWAYS WITH A MINI-ELECTRIC VEHICLE

Partnering with American Honda Motor Company, Inc., CHOC introduced "Shogo," an electric ride-on vehicle for kids that is designed by Honda engineers. CHOC is the first hospital to utilize Shogo in caring for young patients to help make their stay and transportation more enjoyable.

[WATCH SHOGO IN ACTION](#)

## PUSHING THE BOUNDARIES OF WHAT IS POSSIBLE

[WATCH VIDEO](#)

In 2021, we not only adapted to the new challenges presented by the pandemic—we also took advantage of the new opportunities to push the boundaries of what is possible when it comes to caring for children.

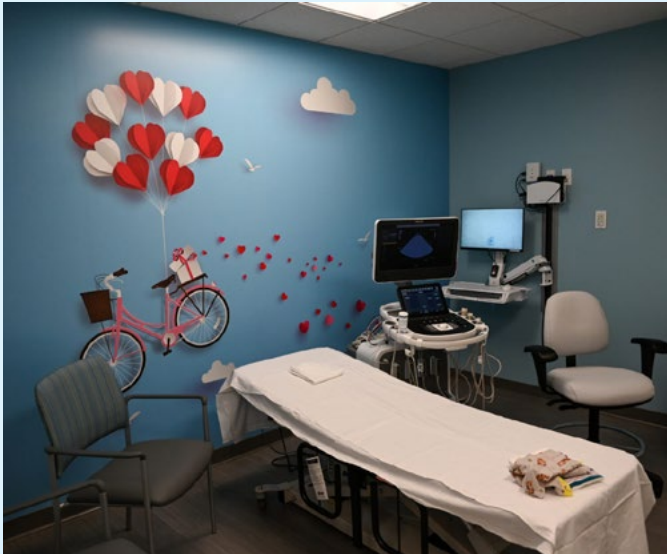
Philanthropy gave us hope to look forward to the future and embark toward uncharted destinations where we can advance and transform pediatric healthcare. In this report, we share highlights of the incredible impact that our donors have made over the year.





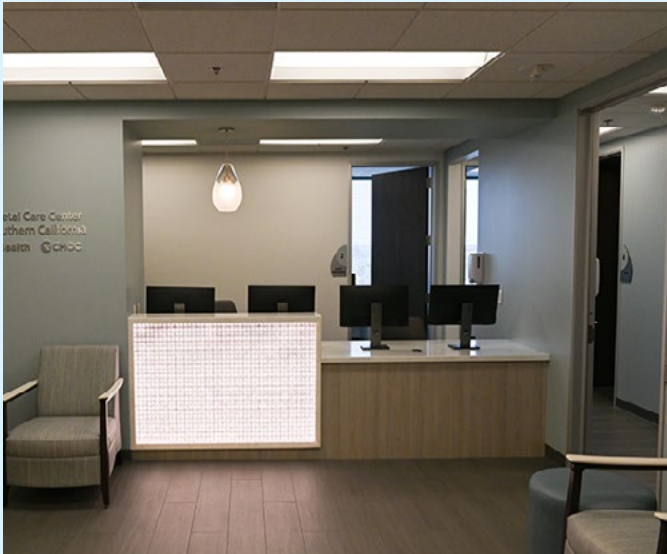
# EXPANDING CHOC'S RESEARCH

Last year, CHOC launched four new centers. These openings reflect CHOC's movement into a transformative era to help meet the regional health needs of today's and tomorrow's generations. [Read More](#)



## OUTPATIENT HEART CENTER

This flagship, 10,000-square-foot space on CHOC's main Orange campus, provides multidisciplinary pediatric cardiology and cardiothoracic surgery outpatient services—all under one roof.



## FETAL CARE CENTER OF SOUTHERN CALIFORNIA

In partnership with UCI Health, this new venture is filling an unmet need in the region as one of the first fetal care centers in Southern California, bringing together experts in maternal-fetal medicine and pediatrics, so both mom and baby are cared for—no matter the diagnosis.



## PRIMARY CARE CLINIC

Designed to maximize access, CHOC's five Primary Care Clinics offer a vast array of critical services, including urgent care, pediatric psychology, social services, radiology and even outpatient rehabilitation. The newest clinic in Orange, a one-stop experience, serves as a model for the way kids receive care.



## PEDIATRIC NUCLEAR MEDICINE SUITE

CHOC is proud to open the only nuclear medicine program in Orange County dedicated exclusively to pediatrics. All equipment in this space is calibrated specially for children, and it has a full suite of radiology offerings for patients to receive assessments and diagnoses with a precision that cannot be matched by other exams.







## FINDING NEW WAYS FORWARD WITH ONE WISH GRANTS

Through philanthropic support, One Wish Grants (OWG) is funding inventive programs and services—created by CHOC physicians and staff—designed to drive CHOC forward. Here are some projects that are helping make a difference.

### **MUSIC THERAPY RECORDING BOOTH**

A dedicated space created for patients, caregivers and therapists, allowing them to record high-quality voice and instrumental arrangements to support creativity and provide comfort during difficult procedures.

### **EXPANSION OF CULINARY MEDICINE MOBILE KITCHEN**

The Culinary Medicine Program improves patients' long-term nutritional health through the combination of cooking and medicine. The funds from OWG allowed this program to expand to 48 demonstrations per year, up from 12.

### **NURSE-DELIVERED AROMATHERAPY**

A safe and effective nurse-delivered aromatherapy pilot program helps manage symptoms and improve quality of life for patients of The Dhont Family Foundation Outpatient Infusion Center and Glass Slipper Guild Post-Anesthesia Care Unit.

## STRIDES IN PEDIATRIC MENTAL HEALTH

At CHOC, we believe that pediatric mental health treatment should be fully integrated with physical health treatment. Here is how we are addressing the current mental health crisis.

### **EXPANDING THERAPEUTIC SUPPORT GROUPS**

In response to a 108% increase of children hospitalized with eating disorders during the pandemic, we started seven-day-a-week sessions for these patients, for a total of seven support groups.

### **91% AVERAGE UTILIZATION RATE FOR THE CHERESE MARI LAULHERE MENTAL HEALTH INPATIENT CENTER**

When the Cherese Mari Laulhere Mental Health Inpatient Center first opened in 2018, only 10% of patients were under the age of 12. In 2020, that number began to increase. Now, it has more than doubled and the center is almost always full.

### **PILOTING FIVE WELLSPACES IN ORANGE COUNTY**

First-of-its-kind for Orange County, a WellSpace is a safe and welcoming school-based oasis, where students may access support and information on a variety of physical and mental health topics, improving their overall well-being. In partnership with the Orange County Department of Education, the creation of WellSpaces is a unique approach to comprehensive care as it removes barriers to critical resources that children need to thrive. Our goal is to have this space at every school in the county.







## PROTECTING OUR COMMUNITY FROM COVID-19

CHOC has been here for pediatric COVID-19 patients since the pandemic's start. Last year, we escalated our service to the community through a variety of opportunities.



**23,614**

COVID-19 VACCINES  
ADMINISTERED.



**57,936+\***

COVID-19-POSITIVE  
PATIENTS TREATED\*

### ACCEPTED COVID-19-POSITIVE PATIENTS INTO OUR MENTAL HEALTH INPATIENT UNIT

At the height of the pandemic, we were the only institution in Orange County supporting these patients.

### SUPPORTED ST. JOSEPH, OUR NEIGHBORING HOSPITAL

by temporarily lending dedicated CHOC neonatal intensive care unit space at St. Joseph Hospital for use with COVID-19 patients last winter.

\*as of January 12, 2022

## CONSISTENTLY NAMED A TOP HOSPITAL

CHOC has continued to earn the distinction of being named a Top Children's Hospital by prestigious industry groups.



### RANKED AMONG NATION'S BEST CHILDREN'S HOSPITALS

in the U.S. News & World Report's 2021-22 rankings. CHOC also ranked in seven different specialty areas: cancer; diabetes and endocrinology; neonatology; neurology and neurosurgery; orthopedics; pulmonology and lung surgery; and urology.



### LEVEL I PEDIATRIC TRAUMA CENTER

CHOC has been verified by the American College of Surgeons as a Level I pediatric trauma center, the highest ranking for trauma centers. This designation recognizes CHOC's commitment to providing the best possible care for all injured children, as well as serving as a trusted pediatric resource for the community. CHOC is currently the only Level I pediatric trauma center in Orange County and the fourth in Southern California.



### 2021 LEAPFROG TOP HOSPITAL

The Top Hospital Award is widely acknowledged as one of the most competitive honors American hospitals can receive. Of the 2,200 hospitals considered, only 149 were honored this year. CHOC is among eight children's hospitals to receive the award, and one of only two from California.



### FOUR-STAR RATING

Charity Navigator, the nation's largest independent charity evaluator, awarded the CHOC Foundation with a four-star rating for its strong financial health and for receiving a 100% score for its commitment to accountability and transparency. Fewer than 25% of all nonprofits achieve the four-star honor and the CHOC Foundation has earned this elite distinction 13 times since 2005.



# GIVING BY THE NUMBERS

\$46,106,000

Total Donations

19,922

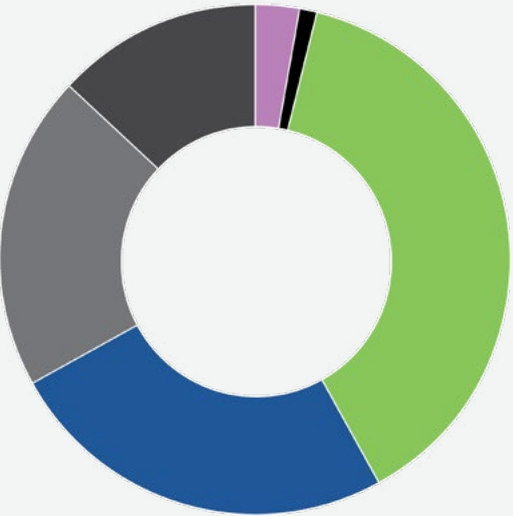
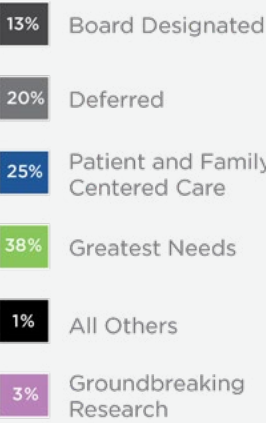
Total Donors

56,948

Number of Gifts

[VIEW DONORS](#)

## GIVING BY AREA



## \$149+ MILLION IN UNCOMPENSATED CARE

Each year, CHOC treats over 185,000 children and teens, providing more than \$159 million in total community benefit—of this provision, \$149 million is uncompensated care, which aids families without insurance or who have inadequate coverage.

## \$1.2 MILLION RAISED FROM THE FIRST VIRTUAL CHOC WALK

The Virtual CHOC Walk, presented by the Disneyland® Resort, drew more than 8,000 participants who walked more than 74,000 miles.

## THANK YOU

The kind generosity of our supporters has enabled CHOC to deliver the best patient and family-centered care, build state-of-the-art facilities, remain resilient in a continuing pandemic and embrace opportunities to chart new territories.

We extend to our Board of Directors a heartfelt thank you for your valued leadership and passionate efforts to inform, inspire and engage our community and generate philanthropic support for the health and well-being of children.

During this climate of uncertainty, we are tremendously grateful to the individuals, organizations, corporations and foundations who continue to stand alongside us.

CHOC is leading the way as a model for pediatric health care, and our success would not be possible without your support.

Together, we are giving children the best chance of growing into healthy and happy adults.





# FOUNDATION BOARD OF DIRECTORS

The CHOC Foundation Board is a group of leaders and advocates who are actively engaged and invested in generating community awareness and philanthropic support for the health and well-being of children.



**Chris Ainsworth**  
Managing Director  
Deutsche Bank



**Stephanie Argyros**  
President & CEO  
The Argyros Group



**Dr. Christine Bixby**  
Neonatologist  
CHOC



**Tony Boutelle**  
President & CEO  
CU Direct



**Dr. Jason Knight**  
Division Chief, Critical  
Care  
CHOC



**GiGi Kroll, MD**  
Newport Women's  
Health



**Delphine Lee**  
Philanthropist



**Annika Chase**  
Senior VP, Commercial  
Strategy  
Disneyland Resort



**Bill Chaney**  
President & CEO  
SchoolsFirst Credit  
Union



**Jim Conroy**  
Boot Barn



**Michele Cortes**  
Founder & CFO  
Vincor Construction, Inc.



**Matt Leinart**  
FOX Sports



**Adrienne Matros,  
PsyD**  
Volunteer



**Ryan Moore**  
American  
Technologies, Inc.



**Kimberly C. Cripe**  
President & CEO  
CHOC



**Lili Daftarian**  
**Vice Chair**  
Co-Founder & Principal  
Daftarian Group Real  
Estate



**Niloofar Fakhimi**  
**Secretary**  
Co-Founder  
Planet Beauty



**Monica Furman**  
**Chair**  
Philanthropist



**Amy Morhaime**  
Philanthropist



**Dana White**  
Chief  
Communications  
Officer  
Hyundai Motor North  
America



**Tusdi Vopat**  
Certified Holistic  
Health and Nutrition  
Coach



**Christopher Harrison**  
**Vice Chair**  
Co-Founder &  
Managing Partner  
Dauntless Capital  
Partners Fund



**Eric Hart**  
President & CEO  
Bridge Loan Financial



**Kevin J. Hayes**  
Managing Partner  
Pendulum Property  
Partners



**Steve Holley**  
CEO  
Coop Home Goods



**Jane Yada**  
Harbor Field Holdings,  
LLC





1201 WEST LA VETA  
ORANGE, CA 92868